

Design Approach

The design approach for the key aspects of phase 1 of the proposals, namely the IDEAS Hub and the extension of the Tractor Barn building, has been informed by a careful consideration of the future needs of the School, whilst also responding to the School's commitments to sustainability and conservation.

Design Team

NLCS is working with award-winning London practice, Walters & Cohen Architects, to design the masterplan and phased proposals for the School. Walters & Cohen have extensive experience in the education sector and are specialists in creating uplifting learning spaces that have a positive effect on the way young people study and interact.

The design team is supported by an expert project team that includes landscape architects, planners and engagement specialists. The team has been working closely with the School to articulate its vision for the masterplan and present the proposals to key decision makers.

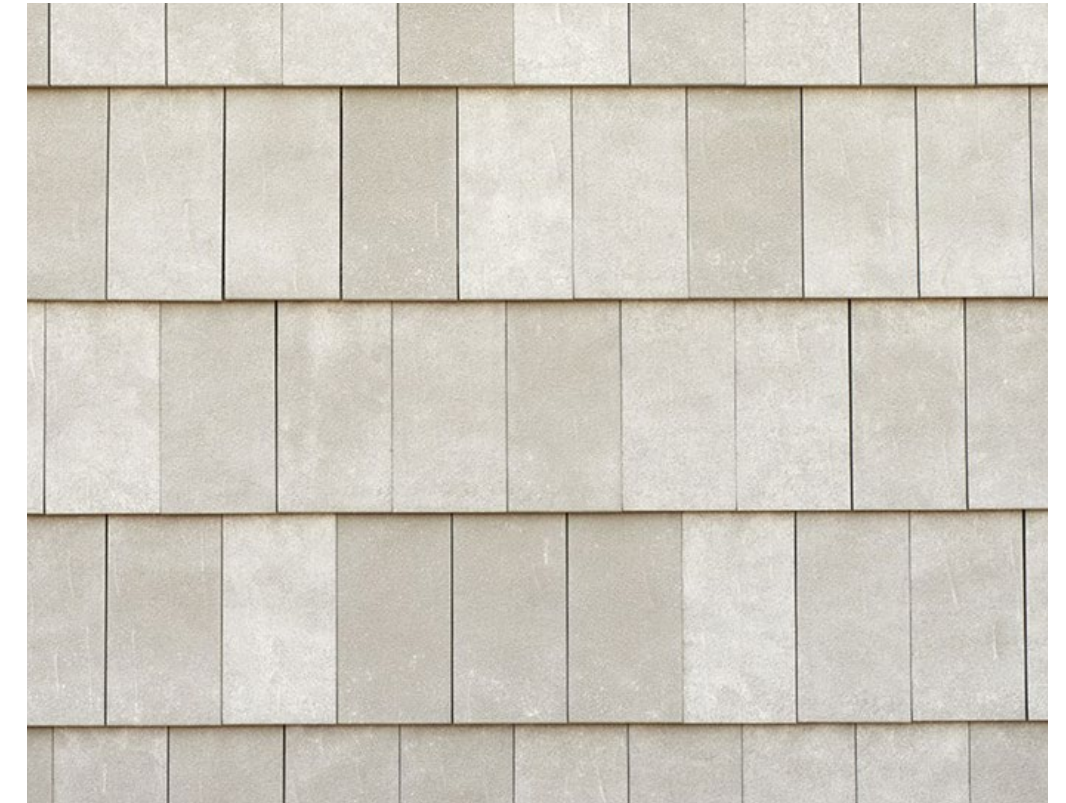
Proposed Materials

Detailed design of the later phases of the masterplan will be guided by a Design Code that will include materials and details specific to each building. Parameter Plans will also guide the future design of these phases by setting the ground rules for the scale and location of these later phases over the next 5 to 20 years.

Overall, the design and choice of materials of these buildings will create distinctive spaces as well as modern and interactive learning environments.



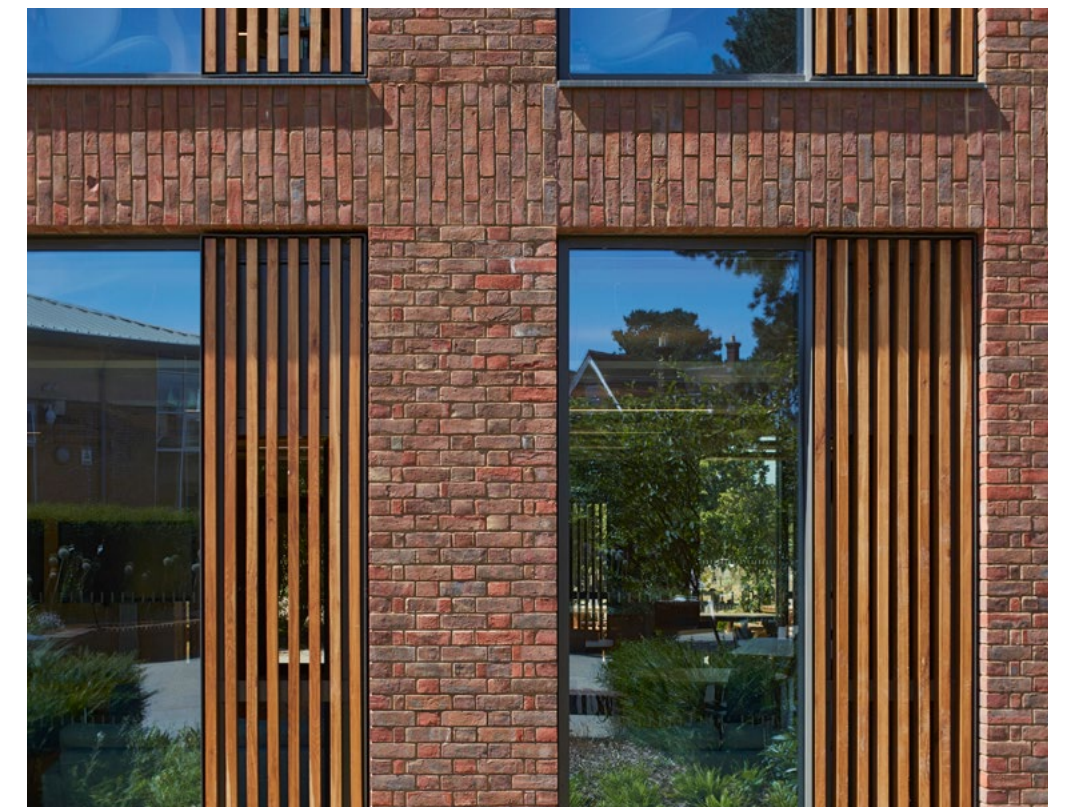
Bagged Brickwork



Roof Clay Shingles: Light Grey



Timber Canopy



Timber Vents